



# MONTHLY MEMBERSHIP PROGRESS REPORT

District 25 A

Results as of: 03/31/2018

GMT: STEVE ANTON

LOCATION INDIANA

GMT CA

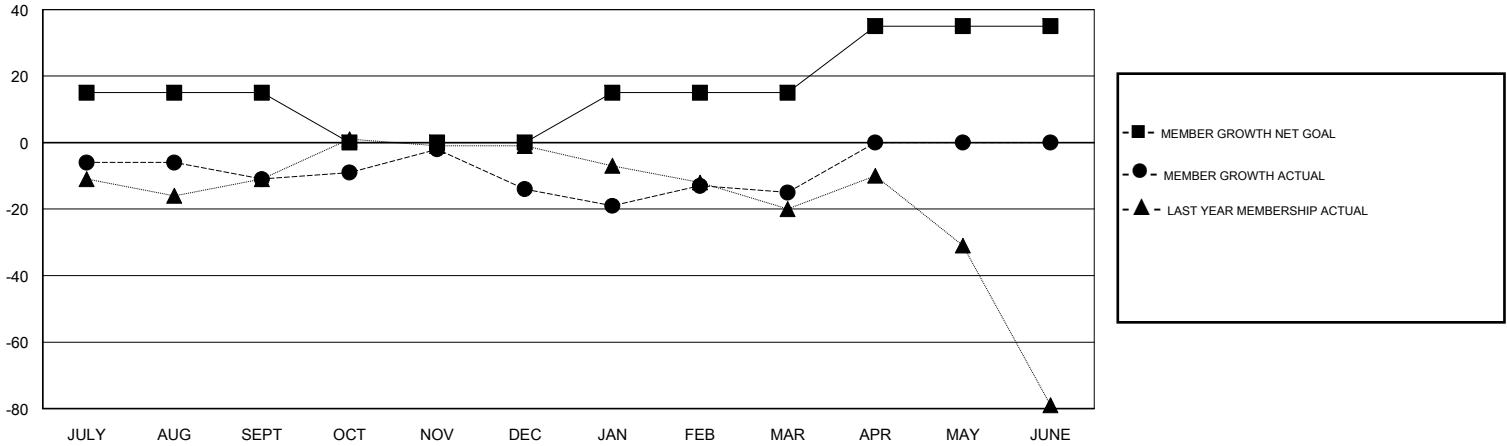
Clubs			
RESULTS FOR 2017-2018			
QUARTER	NEW CLUB GOAL	NEW CLUBS	DROPPED CLUBS
JULY/AUG/SEPT	0	0	0
OCT/NOV/DEC	0	0	0
JAN/FEB/MAR	0	0	0
APR/MAY/JUNE	1	0	0

Members			
RESULTS FOR 2017-2018			
QUARTER	MEMBER GROWTH NET GOAL	MEMBER GROWTH ACTUAL	DROPPED MEMBERS ACTUAL (including transfers)
JULY/AUG/SEPT	15	39	43
OCT/NOV/DEC	-15	42	41
JAN/FEB/MAR	15	30	25
APR/MAY/JUNE	20	0	0

GOALS AND ACTUAL NEW CLUBS CUMULATIVE



GOALS AND ACTUAL MEMBERS CUMULATIVE



DROPPED CLUBS: 0	32 CLUBS OF 50 ADDED 1 OR MORE NEW MEMBERS	<u>GENDER DISTRIBUTION</u>	
DROPPED MEMBERS		MALE	878 (68.06%)
DECEASED	18	FEMALE	412 (31.94%)
CLUB CANCELLED	0	Women Percentage Fiscal Year Goal: 35%	
OTHER	91	TOTAL FAMILY UNIT MEMBERS	
TOTAL	109	302	
<a href="#">CLICK HERE FOR CUMULATIVE MEMBERSHIP DATA</a>		FAMILY MEMBERS PAYING HALF DUES	
		156	